

Writing PCMCIA cards using Tech2 Card Writer

From Tech2

Introduction

The Tech2 Card Writer is an easy to use, yet relatively slow processing, application which allows to write linear flash PCMCIA cards using the RS-232 connection on the Tech2 device. This application is written by AlexRE from AlexRE.RU[1] (<http://www.alexre.ru/?item=3tech2>) in 2011.

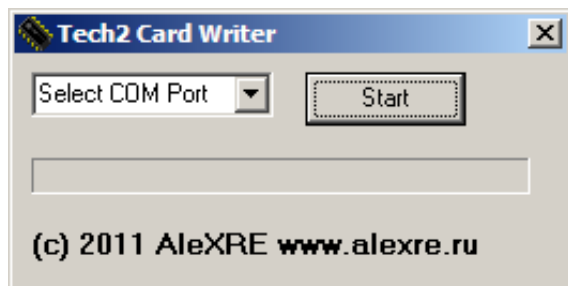
Reference information

Required hardware: Tech2 device PCMCIA card inside the Tech2 device COM port, this can be physical DB9 of a USB2serial cable on a desktop/laptop computer.

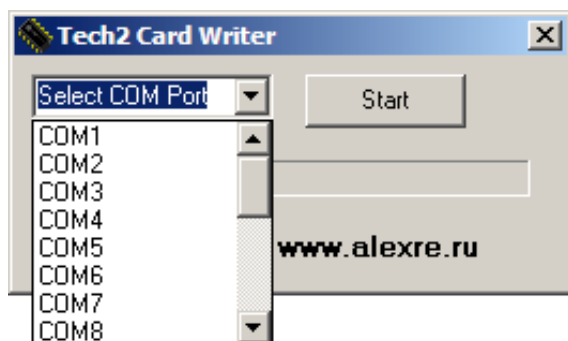
Required software: Microsoft's Windows Tech2 CardWriter from AlexRE.RU [2] (<http://alexre.ru/galery/upload/%D0%A4%D0%B0%D0%B9%D0%BB%D1%8B/Tech2/cardwriter.zip>)
Tech2 PCMCIA card bin files [3] (http://alexre.ru/?item=5galery&galery_folder=%D0%A4%D0%B0%D0%B9%D0%BB%D1%8B/Tech2/Cards)

Starting the Memory Card Explorer software

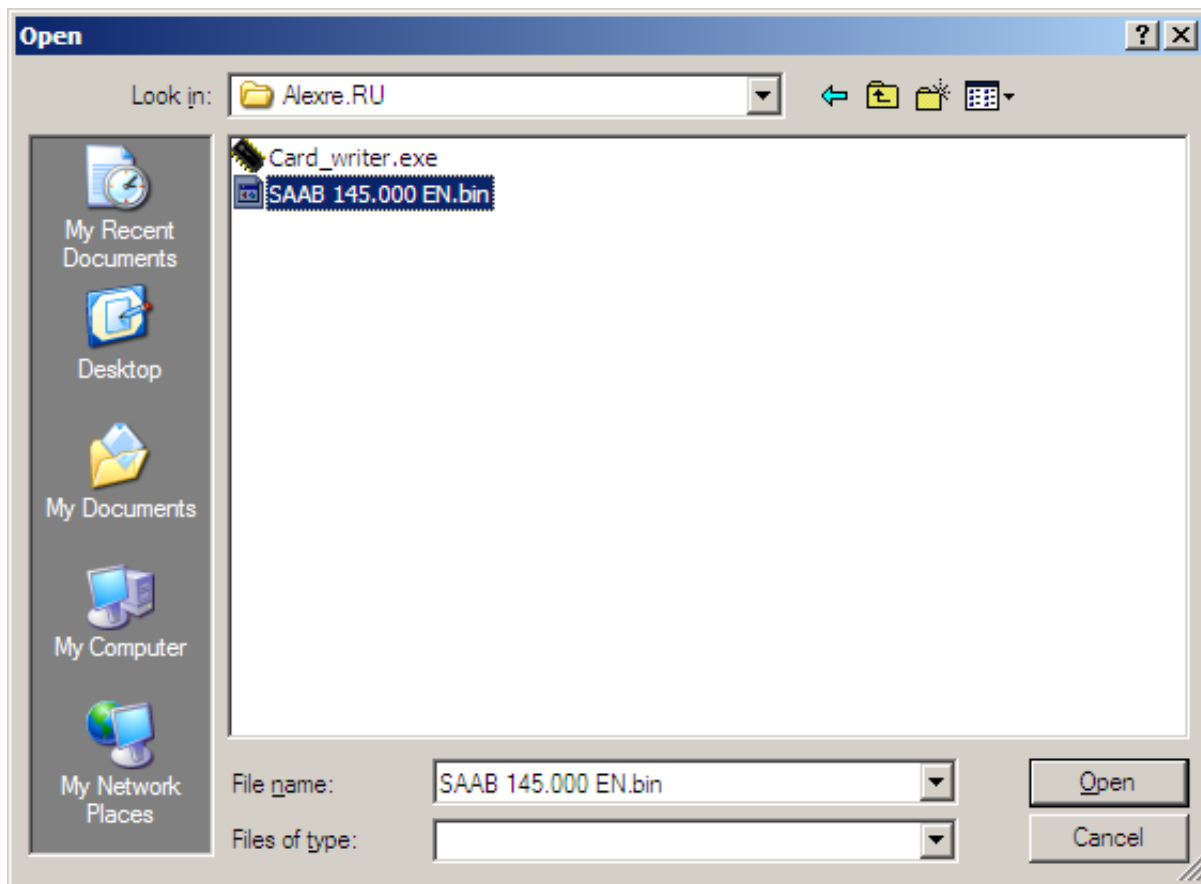
Start the `Card_writer.exe`



Select the designated com port which connects to the Tech2.

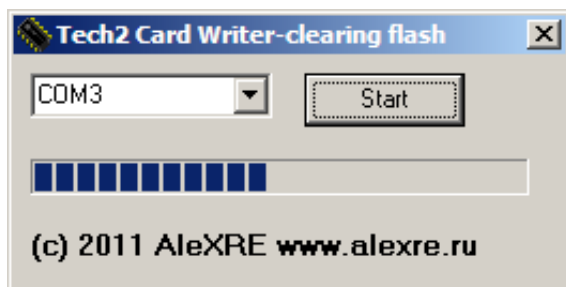


Select the file to upload to the PCMCIA card which is inserted into the Tech2.

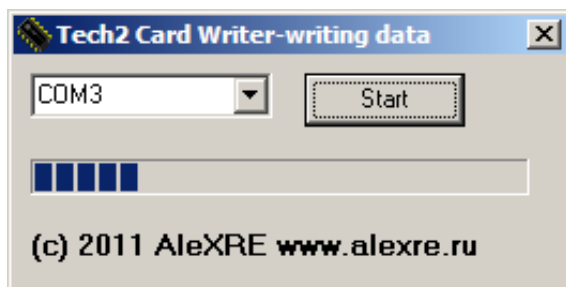


Please note that starting this operation the content of the PCMCIA card, inserted in the connected Tech2 device, will be overwritten!

Start the process and wait for several minutes to complete the clearance of the flash memory.



The second stage will be writing the flash memory which also takes multiple minutes.



The Tech2 display will now show a similar screen;

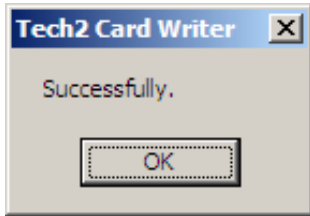
Download Mode

RS232 Connection

0 : 1

This process takes around 15 minutes for a 32MB card.

After processing the .BIN file from your computer to the Tech2 the Tech2 Writer software will report the status.



Retrieved from "http://www.tech2wiki.com/index.php?title=Writing_PCMCIA_cards_using_Tech2_Card_Writer&oldid=87"

-
- This page was last modified on 25 January 2015, at 01:38.
 - This page has been accessed 249 times.
 - Content is available under Creative Commons Attribution-ShareAlike unless otherwise noted.